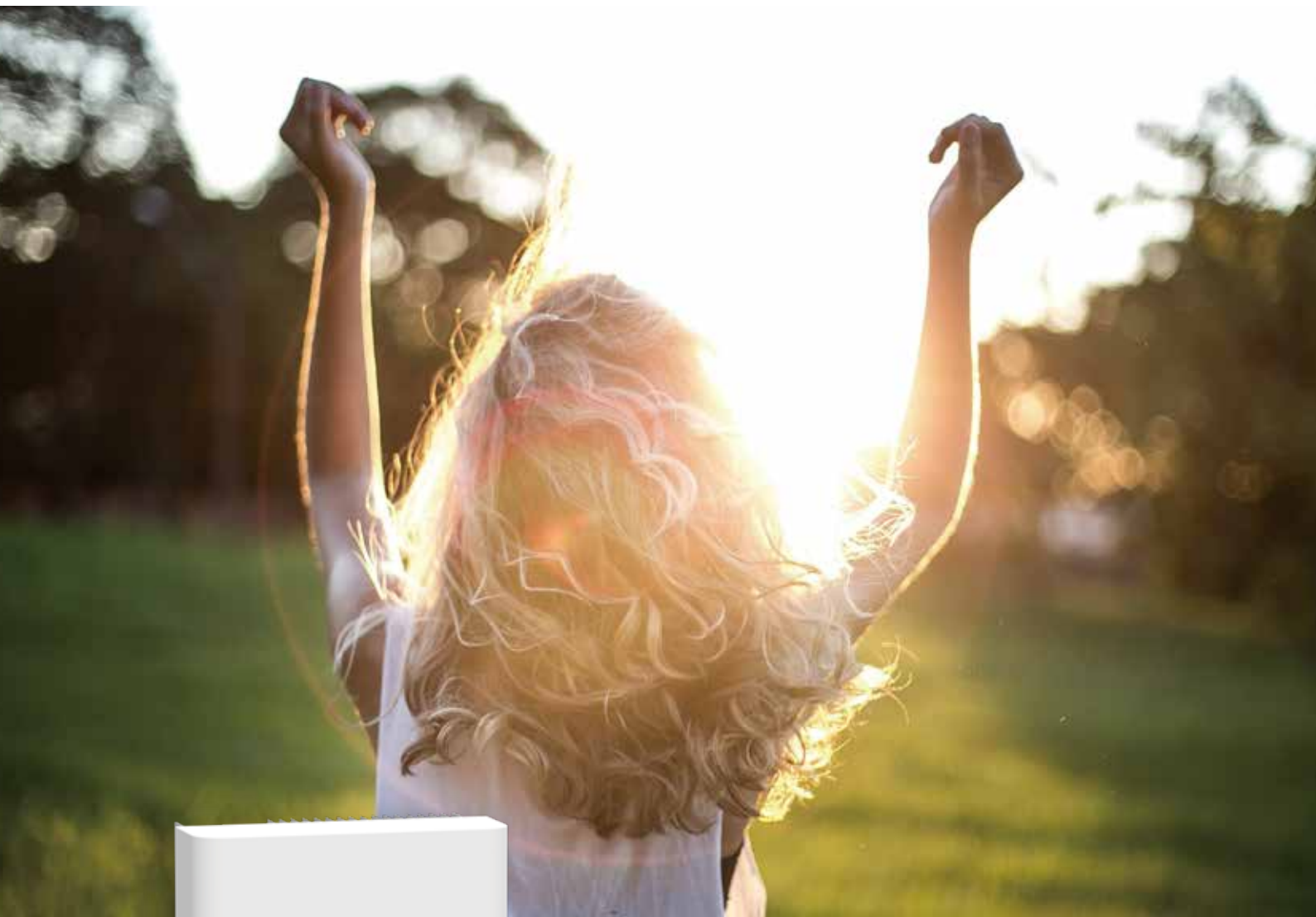


# Three Phase String Inverter(LV)

SUN-6/8K-G03-LV SUN-6/8K-G05-LV



- LV** 127/220Vac and 60Hz, Three phase system
- ▲** 2 MPP trackers, Max. efficiency up to 98.5%
- F** Zero export application, VSG application
- ▲** String intelligent monitoring (optional)
- ~** Wide output voltage range
- PID** Anti-PID function (Optional)

**Deye**

Stock Code: 605117.SH

Model	SUN-6K-G03-LV	SUN-8K-G03-LV	SUN-6K-G05-LV	SUN-8K-G05-LV
<b>Input Side</b>				
Max. DC Input Power (kW)	7.8	10.4	7.8	10.4
Max. DC Input Voltage (V)	800			
Start-up DC Input Voltage (V)	250			
MPPT Operating Range (V)	200~700			
Max. DC Input Current (A)	13+13	13+26	13+13	13+26
Max. Short Circuit Current (A)	19.5+19.5	19.5+39	19.5+19.5	19.5+39
No.of MPP Trackers	2			
No.of Strings per MPP Tracker	1	1+2	1	1+2
<b>Output Side</b>				
Rated Output Power (kW)	6	8	6	8
Max. Active Power (kW)	6.6	8.8	6	8
Grid Connection Form	3L/N/PE 127V/220V		3L/N/PE 133V/230V	
Rated Grid Frequency (Hz)	60Hz/55Hz-65Hz		50Hz/45Hz-55Hz	
Operating Phase	Three phase			
Rated AC Grid Output Current (A)	15.7	21	15.1	20.1
Max. AC Output Current (A)	17.3	23.1	15.1	20.1
Output Power Factor	0.8 leading to 0.8 lagging			
Grid Current THD	<3%			
DC Injection Current (mA)	<0.5%			
Grid Frequency Range	57~62			
<b>Efficiency</b>				
Max. Efficiency	98.3%	98.5%	98.3%	98.5%
Euro Efficiency	97.5%			
MPPT Efficiency	>99%			
<b>Protection</b>				
DC Reverse-Polarity Protection	Yes			
AC Short Circuit Protection	Yes			
AC Output Overcurrent Protection	Yes			
Output Overvoltage Protection	Yes			
Insulation Resistance Protection	Yes			
Ground Fault Monitoring	Yes			
Anti-islanding Protection	Yes			
Temperature Protection	Yes			
Integrated DC Switch	Yes			
Remote software upload	Yes			
Remote change of operating parameters	Yes			
Surge protection	DC Type II / AC Type II			
<b>General Data</b>				
Size (mm)	330W×457H×205D	333W×472H×202D	330W×457H×205D	333W×472H×202D
Weight (kg)	11	15	11	15
Topology	Transformerless			
Internal Consumption	<1W (Night)			
Running Temperature	-25~65°C, >45°C derating			
Ingress Protection	IP65			
Noise Emission (Typical)	≤30 dB	≤40 dB	≤30 dB	≤40 dB
Cooling Concept	Natural cooling	Smart cooling	Natural cooling	Smart cooling
Max. Operating Altitude Without Derating	2000m			
Warranty	5 years			
Grid Connection Standard	VDE4105, IEC61727/62116, VDE0126, AS4777.2, CEI 0 21, EN50549-1, G98, G99, C10-11, UNE217002, NBR16149/NBR16150			
Operating Surroundings Humidity	0-100%			
Safety EMC / Standard	IEC/EN 61000-6-1/2/3/4, IEC/EN 62109-1, IEC/EN 62109-2			
<b>Features</b>				
DC Connection	MC-4 mateable			
AC Connection	IP65 rated plug			
Display	LCD1602			
Interface	RS485/RS232/Wifi/LAN			